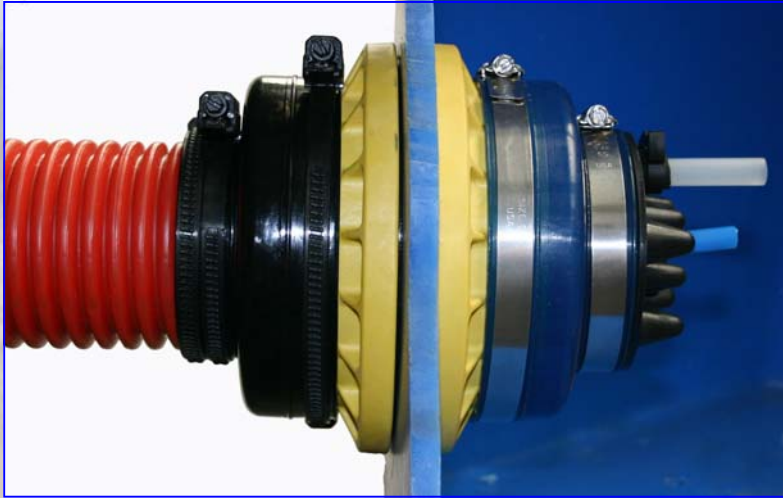


# " EASY FIT " PIPE ENTRY FITTINGS

## Installation Instructions



# " EASY FIT " PIPE ENTRY FITTINGS

## Installation Instructions

### Installation of the "Easy Fit" Cuffs

#### Step one:

Drill a hole in the sump wall, using the correct hole saw diameter :

HS3125 / 80mm:	For small size cuff model TEF0035
HS5018 / 130mm:	For medium size cuff model TEF0055
HS6058 / 168mm:	For large size cuff model TEF0075

#### Step two:

Using TC0023 Tangit cleaning fluid or equivalent, clean all sump and fitting surfaces prior to installation. Remove burrs to smooth out the sump surface. Remove dust, dirt and grease.

Note: For very uneven sump surfaces you must follow the sump manufacturer's instructions using filler and sanding if necessary to get a smooth enough surface for a good seal.

#### Step three:

Make sure the nuts are pushed firmly into the hexagonal seats of studded cuff.

#### Step four:

Insert the flat or curved gasket into the groove on each cuff side. Apply a bead of BOSTIK FS2639 sealant or equivalent on the outer surface of each gasket on both cuffs. It is not necessary to do this in the gasket groove; although it may help holding the gasket into the groove!

#### Step five:

Position the cuffs over the hole previously drilled into the sump wall. Clip the inside and outside cuff together making sure the stud-  
ded cuff with nuts is on the outside of the sump. In case of very thick sump walls, the alignment studs and bolts may be too short. In that case order longer bolts and use these to line up and fasten the cuffs together. The use of longer bolts does not alter the functionality of the fitting.

#### Step six:

From the inside of the sump push the bolts through the middle hole of each tab of the cuff.

Use the Tee Handle Allen wrench ACB034 to screw the fitting together to a max. torque of 80 inch.lbs/ 90Nm/ 9kgm. Remove any excess of sealant that will have been squeezed out around the outside and inside cuff .



# " EASY FIT " PIPE ENTRY FITTINGS

## Installation Instructions

### Installation of the "Easy Fit" Boots

#### Always use the correct boot size

Consult the "Easy Fit" leaflet to match the boot size with the pipe size. Product codification principle:

Boot TRP5563A

- boot equipped with an air valve for test purpose
- for 63mm O.D. pipe
- for medium size cuff TEF0055

#### Single side sealing of the pipe with a boot inside the sump:

Push the boot over the inside cuff; make sure that the boot edge hits the cuff ribs. Tighten the stainless steel clamp with the torque wrench CW0030. Push the pipe through and tighten the stainless steel clamp with the torque wrench CW0030.

#### Double side sealing of the pipe using boots in and outside the sump:

##### Boot inside the sump

Push the boot over the inside cuff; make sure that the boot edge hits the cuff ribs. Tighten the stainless steel clamp with the torque wrench CW0030.

##### Boot outside the sump

Push the boot over the outside cuff; make sure that the boot edge hits the cuff ribs. Nylon clamps instead of stainless steel clamps are used on boots that are outside the sump (buried clamps)

Tighten the Nylon clamp with the supplied Hex key.

Push the pipe through and tighten the stainless steel clamp inside with the torque wrench CW0030 and the Nylon clamp outside with the supplied Hex key to maximum of 90 inch.lbs/ 100Nm/ 10kgm.



Double sided pipe sealing



Single side pipe sealing

# " EASY FIT " PIPE ENTRY FITTINGS

## Installation instructions

### For secondary contained pipe systems

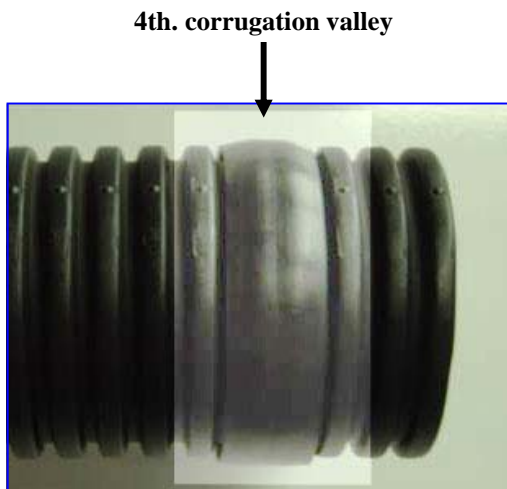
"Easy Fit" pipe entry fittings work with four types of secondary ducts:

CD3501 cable duct:	requires TEF0055 - TRPD90 - TRP5590
SP3501 secondary duct:	requires TEF0055 - TRPD90 - TRP5590
SP4501 secondary duct:	requires TEF0055 - TRPD117 - TRP55117
SP6001 secondary duct:	requires TEF0075 - TRPD145 - TRP75145

See for technical details the application note: "Easy Fit Double Wall Application E"

#### Note:

1. All boots installed outside the sump (buried) are equipped with Nylon clamps NC125 or NC250 instead of Stainless Steel clamps.
2. Add an "A" to the product code for boots with an airstem testing facility; is only used when installed inside the sumps and to test secondary duct systems.



#### Boot outside the sump

Push the boot over the outside cuff; make sure that the boot edge hits the cuff ribs. Tighten the Nylon clamp with the supplied plastic key to a maximum of 90 inch.lbs/ 100Nm/ 10kgm.

Install the TRPD duct seal in the fourth valley (starting from the duct end) of the corrugated secondary duct. Push the secondary duct into the boot till the duct seal is fully seated in the boot. Tighten the two Nylon clamps with the supplied plastic key to a maximum of 90 inch.lbs/ 100Nm/ 10kgm.

#### Boot inside the sump (eventually equipped with an air valve for testing purpose)

Push the boot over the inside cuff; make sure that the boot edge hits the cuff ribs. Tighten the stainless steel clamp with the torque wrench CW0030.

Push the pipe through and position with the appropriate insert into the boot. Tighten the stainless steel clamp with the torque wrench CW0030.

Perform the test of the secondary duct at a maximum pressure of 2- 3psi / 200-300mbar.