

Hydrophore

pressure equipment

Assignment:

Hydrophore pressure equipment is designed for storing water in fire protection systems and maintenance (stabilization) of required water pressure in water pie network and ensuring adequate water reserves (water storing) in case of increased consumption of water.

General characteristics:

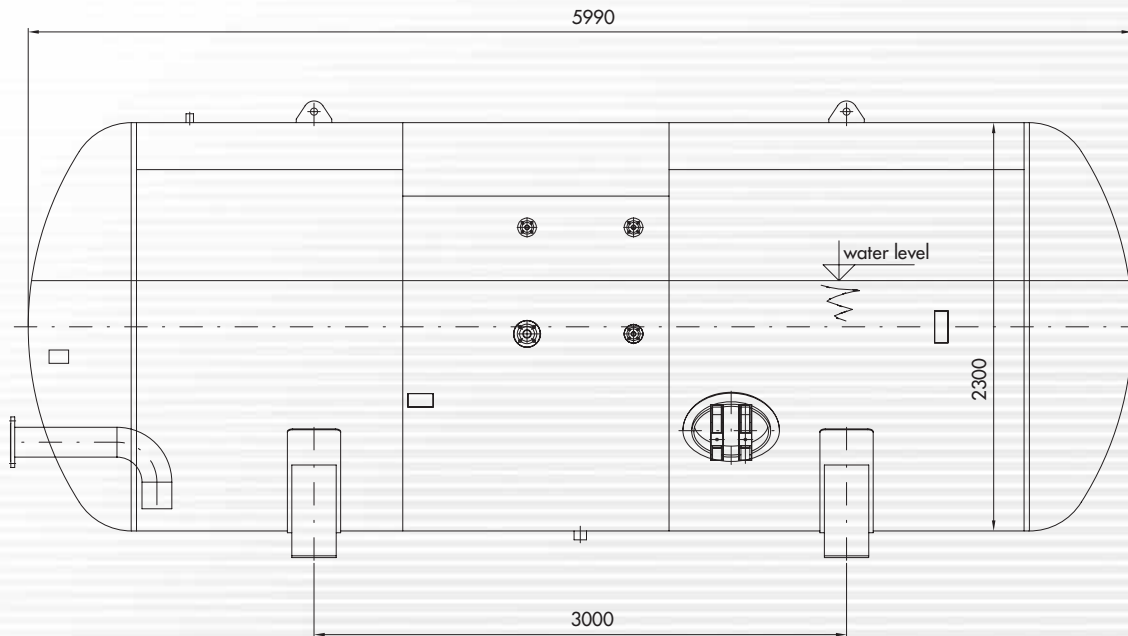
Hydrophore tank constitutes horizontal equipment placed on two steel supports welded to the rolling section of the tank. The rolling section (jacket) is closed with convex bottoms on both ends. The tank is equipped with an assembly of stub pipes and a manhole enabling an internal inspection and repair works. All the elements of the tank have been fabricated of coal steel coated with anti-corrosive paints.



No	Parameter	Value	Unit
1	Nominal diameter	2300	mm
2	Capacity	23640	Litre
3	Maximum PS pressure admissible	10,00	bar
4	Minimum/maximum TS temperature	6/50	°C
5	PT test pressure	14,30	bar
6	Working medium	water/air	
7	Empty tank weight	4902	kg
8	Tank weight during pressure test	30113	kg
9	Tank weight in operation – approx.	~21000	kg
10	Estimated life of equipment ¹⁾	20	years

¹⁾ In order to ensure the estimated life of equipment, the instructions of this manual are to be complied with

Hydrophore pressure equipment



Symbol	Description	Size/DN	PN	Abutment type in Range connections	Screw/nut material	Gasket material	Assembly tension	Standard
N1	Water inlet/outlet	DN150	16	01B	5.6 / 5	Rubber hardness - over 75 acc. to Shore's scale	59,89	PN-ISO 7005-1
N2	Water inlet	DN40	16	01B	5.6 / 5	Rubber hardness - over 75 acc. to Shore's scale	12,47	PN-ISO 7005-1
N3	Compressed pressure inlet	DN20	16	01B	5.6 / 5	Rubber hardness - over 75 acc. to Shore's scale	6,34	PN-ISO 7005-1
N4	Water level gauge	DN20	16	01B	5.6 / 5	Rubber hardness - over 75 acc. to Shore's scale	6,34	PN-ISO 7005-1
N5	Service connector pipe	G-1 int.	10	-	-	-	-	-
N6	Drain	G-2 int.	10	-	-	-	-	-
M1	Manhole	320/420	10	-	St3S / 5	Rubber hardness - over 75 acc. to Shore's scale	24,77	According to manufacturer